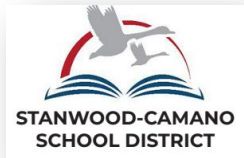




Program Evaluation and Assessment

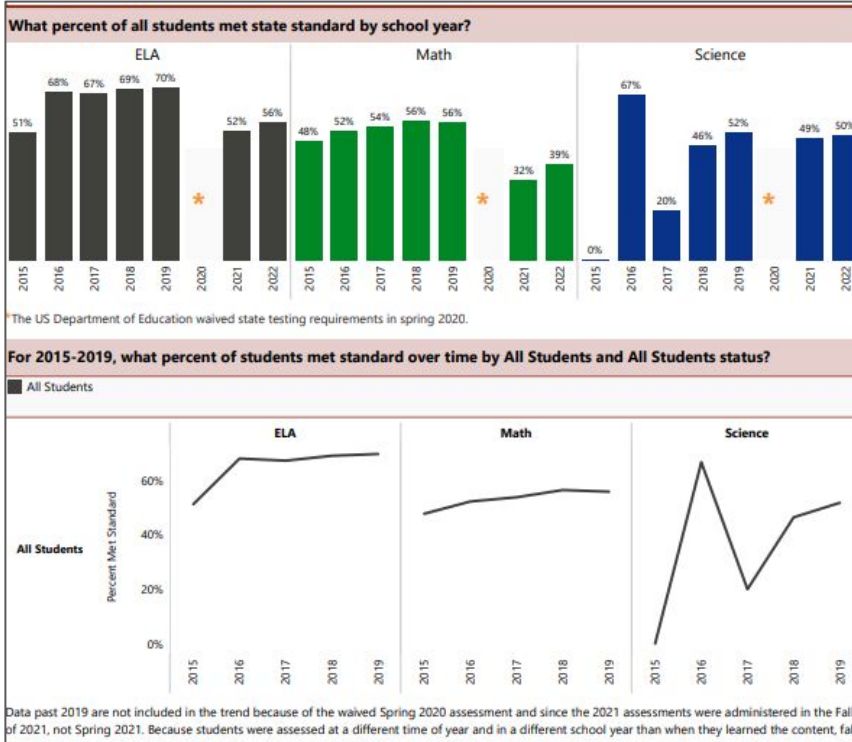
Ryan Ovenell



OUR PROMISE

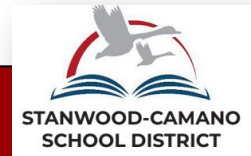
Every student in the Stanwood-Camano School District is **empowered to learn** in an inclusive setting and is **prepared for the future** of their choice.

Program Evaluation



These data are trend data reported by OSPI for all SCSD students who took the Smarter Balanced Assessment.

Empowered to Learn!

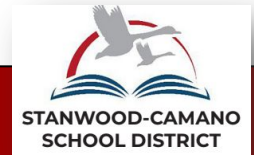


SCSD Assessment Calendar

Assessment	Content Assessed	Schedule	Grade Assessed
Smarter Balanced Assessment Math*	Washington State learning standards for Math	March 6 – June 6, 2023	3-8 and 10. Also available to students in grades 11 and 12 who want to use this as a graduation pathway.
Smarter Balanced Assessment English Language Arts*	Washington State learning standards for English Language Arts	March 6 – June 9, 2023	3-8 and 10. Also available to students in grades 11 and 12 who want to use this as a graduation pathway.
Washington Comprehensive Assessment of Science*	Science	April 10 – June 2, 2023	5, 8 and 11
MAP - Measure of Academic Progress	MAP is a computerized adaptive test which helps monitor academic growth in math and reading.	Fall, Winter and Spring of each year	Grades 3-5
aimswebPlus	aimsweb@Plus screens and monitors the reading and math skills	Fall, Winter and Spring of each year	Grades K,1,2,3,4,5
WIDA* World-Class Instructional Design and Assessment	Writing, Reading, Listening, and Speaking Assessment of Students who are Multilingual Learners	January 30 - May 5, 2023	K - 12
WaKIDS - Washington Kindergarten Inventory of Developing Skills	WaKIDS provides a snapshot of where kindergartners are in their development early in the school year	September - October	Kindergarten

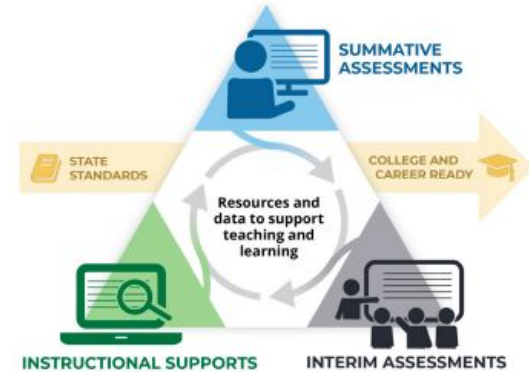
*Required for federal and state accountability

Empowered to Learn!



Program Evaluation Committee

- Development of Program Evaluation Committee
 - Will review District Assessment Program through committee
 - Will consider factors such as validity, administration, and interpretation of results
 - Recommendation will include assessment schedule for 23-24.



Empowered to Learn!

Questions?

Empowered to Learn!

